

EasyFit Fitting Instructions



Precision
Engineering
& Reliability



Fitting Instructions

The required aperture for the access door to fit into should be between 30-32mm smaller than the door size being used.

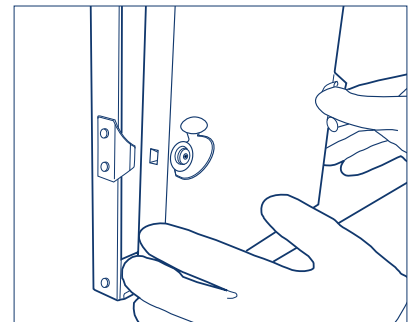
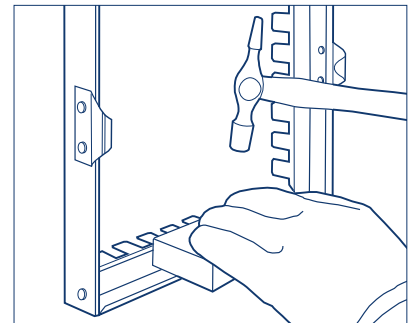
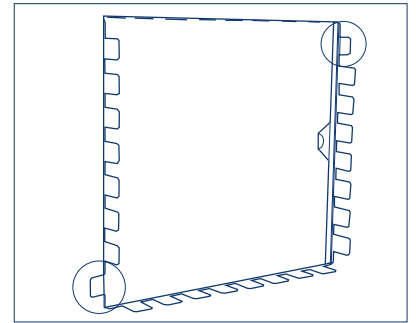
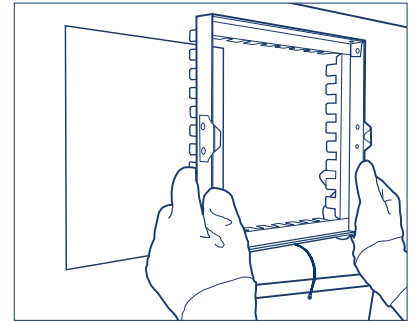
Swing the wire retained door carefully away to the bottom as shown in the diagram opposite prior to fitting. *All doors are connected to the door frame with a retaining wire. When removing the tabbed access door for fitting and later, inspection, care must be taken. The standard retaining wire is not designed to be used as the doors only point of support.

**Can be supplied also without retaining wire upon request.*

Ensure the location is marked on the duct surface at the correct dimensions required for the hole size, cut aperture using Doby Verrolec Turbo Shears or similar equipment. Secure the access door subframe into the aperture by pressing down two tabs from diagonally opposed corners.

Using a support to hammer against, tap over the remaining metal tabs on the fitted subframe and ensure that all tabs are knocked over and the sealing gasket is under compression on all faces, including the corners.

Complete the fit by mounting the remaining door into the frame and tighten the camlocks to the degree of tightness required - do not over tighten. Make sure also that the retaining wire is not snagged between the door and frame.



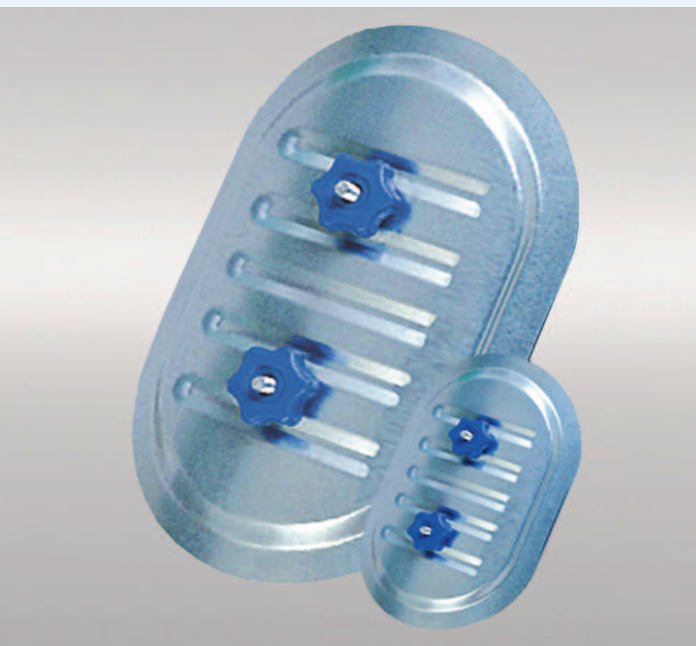
Safety

The diagrams and text above are shown for guidance purposes only, when working with Shears and Steel products ensure care must always be taken to avoid accidents, suitable PPE protective clothing should be worn to minimise the risk of injury.





DobyGrip®



Doby Verrolec, Harelaw Industrial Estate, Stanley,
Co. Durham. DH9 8UJ England

Tel: +44 (0) 1207 238844

Fax: +44 (0) 1207 283563

e-mail: enq@dobyverrolec.com

Web: www.dobygrip.com www.dobyverrolec.com www.dobysolutions.com